



# Diagbox Installation Guide

© Andy Davis - The Peugeot Man for  
Peugeotforums.com, Peugeot 407 UK & Peugeot 206 Owners Club UK

## BACKGROUND

This guide follows on from my previous one – the *Planet Operators Guide* - which details obtaining a Lexia cable and installing Peugeot Planet.

This guide is to assist with installing the more modern and versatile DIAGBOX software, which works with both Peugeot and Citroen vehicles, on a Windows 10 laptop.

## PART 1: HARDWARE

### 1.1 LEXIA Cable suppliers

There are a number of suppliers of the equipment - *AliExpress & Ebay* being the most common - with varying prices and guarantees of compatibility.

At the moment there appears to be two types of cable on the market.

This is the one you need to be looking for. Note that the Lexia unit has a very short cable that goes to a multi-pin connector.

There is then a second cable that goes from this and connects to the OBD port of the car.



This is the other cable on the market.

Note it has no multi-connector adapter in the middle of it.

Some users have reported that this cable isn't fully compatible or worked with their cars. But the author of this article hasn't verified it.

The cable you want needs to have **FIRMWARE REVISION C**.



This *AliExpress* link is still valid at time of writing, and the author has this cable.

<https://www.aliexpress.com/item/1000001561755.html>

## 1.2 Laptop

Unlike Peugeot Planet, Diagbox is quite resource hungry. It will run on older laptops, but will run faster on newer equipment, especially if you have a core i3 processor or higher and an SSD.

Some users prefer to run Diagbox and Planet in virtual machine environments, and may already have an expensive, powerful laptop to do the job (you can't install Planet and Diagbox on the same computer), but this guide is for a single install on a cheap laptop.

The one I'll be using is a DELL LATITUDE 3550. The specs are:

Core i3 5005U processor, 2Ghz

500Gb SATA Hard drive

4Gb RAM

Windows 10 Professional, version 1909.3 – **32 BIT** (this is important!)



Second hand models can be picked up from Ebay for around £50.

## PART 2: SETTING UP THE LAPTOP

### 2.1 Partitioning and Imaging

Before we get onto the matter of installation, it's very important to discuss how you're going to set up your laptop, and precautions you need to take.

One issue with *Planet* and *Diagbox* is that it installs files to multiple places on your computer and not just in the program folder. This causes issues if the install goes wrong or breaks in the future, because you cannot just uninstall and re-install. You need a brand new, clean operating system.

So, we'll need some imaging software to take a snapshot of your completed Windows installation.

There are a number of programs out there, such as Norton Ghost, Acronis, Partimage, Clonezilla, AOMEI Backupper, Macrium Reflect, Paragon, as well as backup tools provided by drive manufacturers like Seagate or Western Digital.

You may also want to set up your laptop to alternate between *Planet* and *Diagbox* if you don't want the hassle of buying and running two laptops. If you do then you'll want to split up (or partition) your hard drive to allow this.

Some owners have got around both of these issues by using virtual instances of Windows with software like Virtualbox or VMWare Workstation. There are pros and cons to that method, which I won't go into here – they've been covered on [peugeotforums.com](http://peugeotforums.com).

I'll stick with the old fashioned method of installing a single OS and using the laptop as a dedicated diagnostics device.

### 2.2 Installing Windows

So, we'll assume at this point you:

*Have a laptop*

*Have obtained a copy of Windows 10 32 bit*

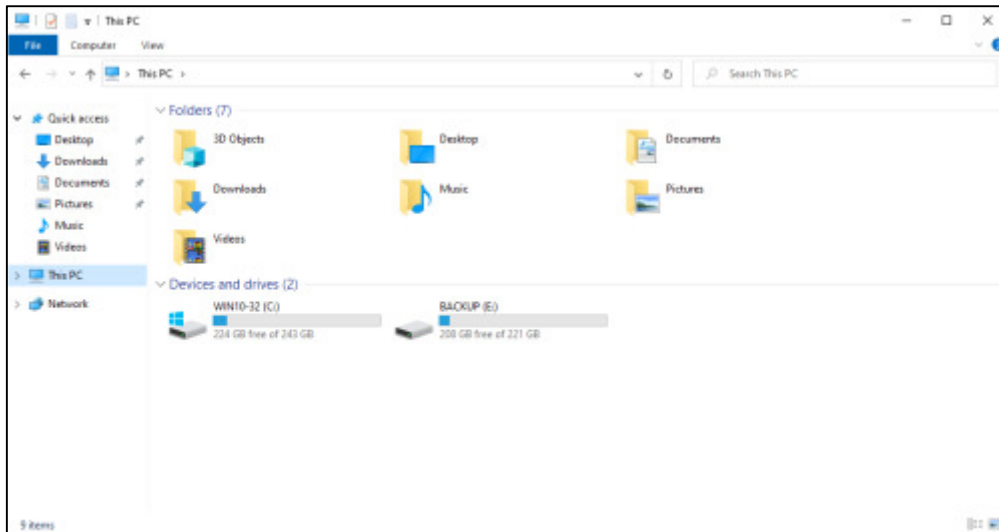
So, we'll get on with installing Windows. Nothing special to be noted here, other than partitioning.

My demo laptop has a 500 GB hard drive.

I've partitioned 250 GB for Windows 10, leaving me 250 GB for backup images.

## 2.3 Making a backup Image

An hour or so later, Windows 10 is installed and I've gone into disk manager to use the other 250Gb as a backup partition. On here I'll also put my Diagbox install files.

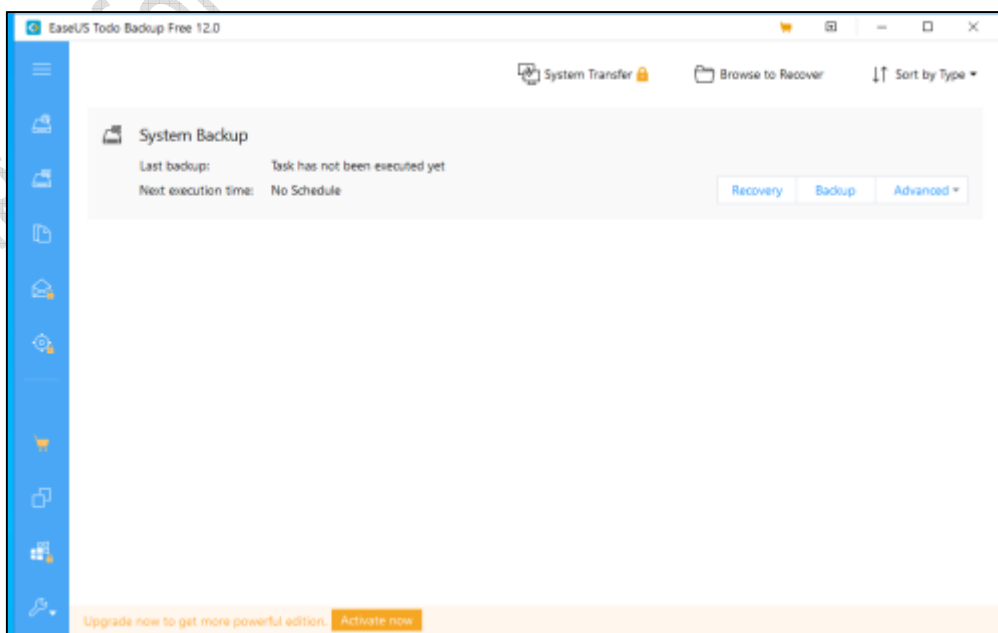


I've also downloaded and installed EASEUS TODO BACKUP FREE 12.0

It's now time to make a backup image, or snapshot, of the fresh Windows installation.

If anything goes wrong with your Diagbox install, or you just want a fresh installation of Windows, restoring from an image will take minutes, rather than hours of a fresh install, and then all the drivers and updates you have to do.

The free version of the EaseUS backup software is very simple and takes around ten minutes to make an image of your OS install to the "E" partition you see above.

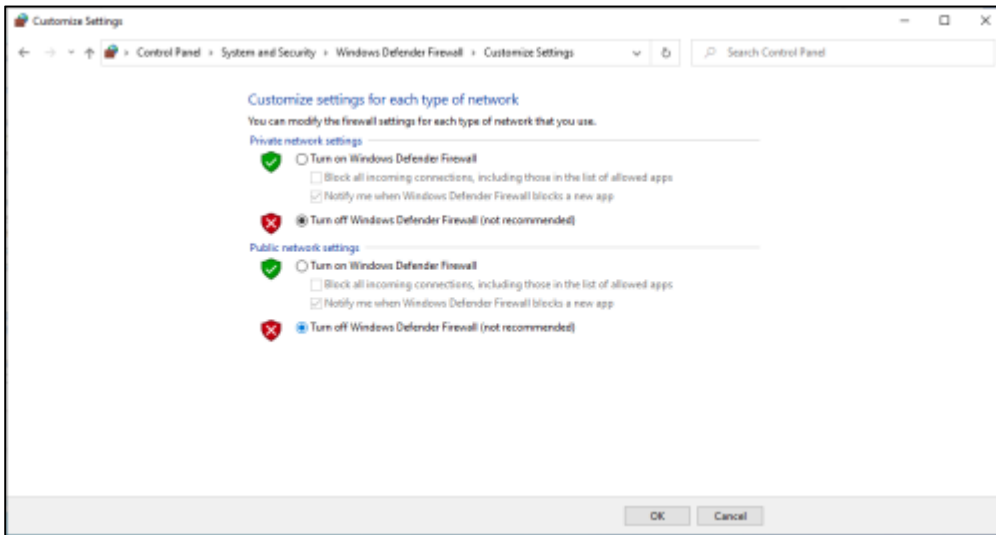


## PART 3: INSTALLING DIAGBOX

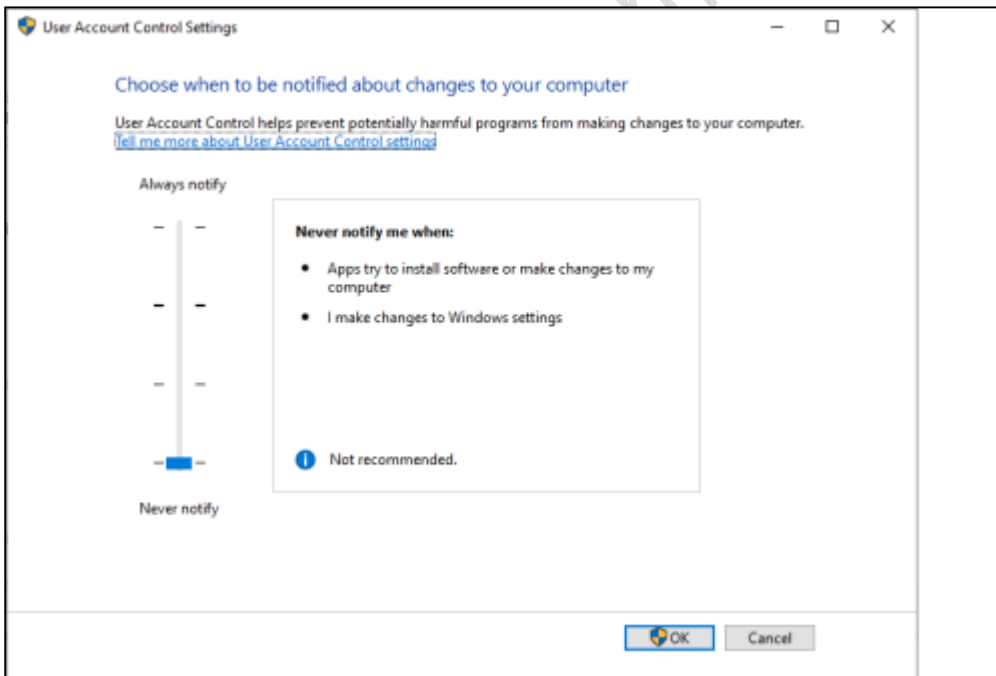
### 3.1 Preparing the OS

Diagbox needs the following to be done, without exception:

**Firewall must be turned off:**



**UAC (User Access Control) must be set to the lowest setting:**



**Windows Defender anti-virus must be disabled with the following turned off:**

***Real Time Protection***

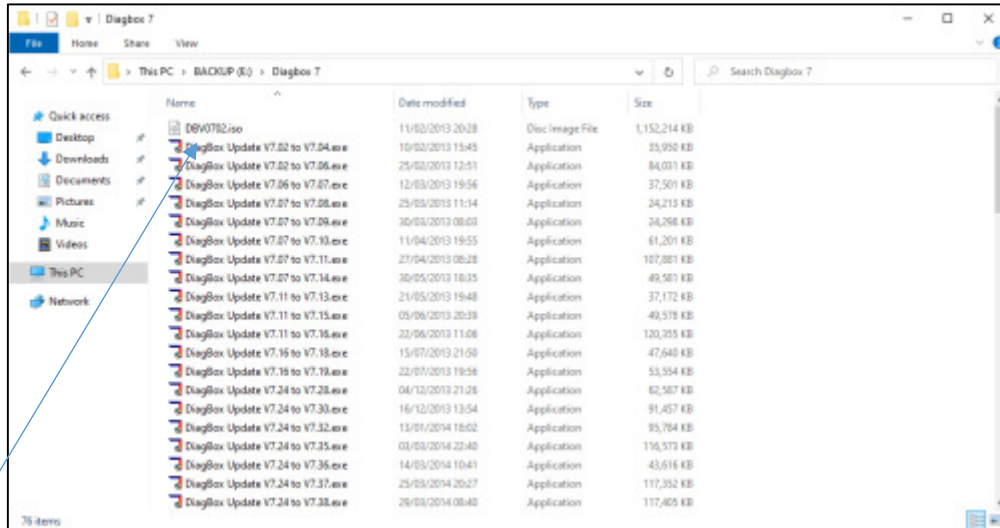
***Cloud Delivered Protection***

***Automatic Sample Submission***

## Tamper Protection

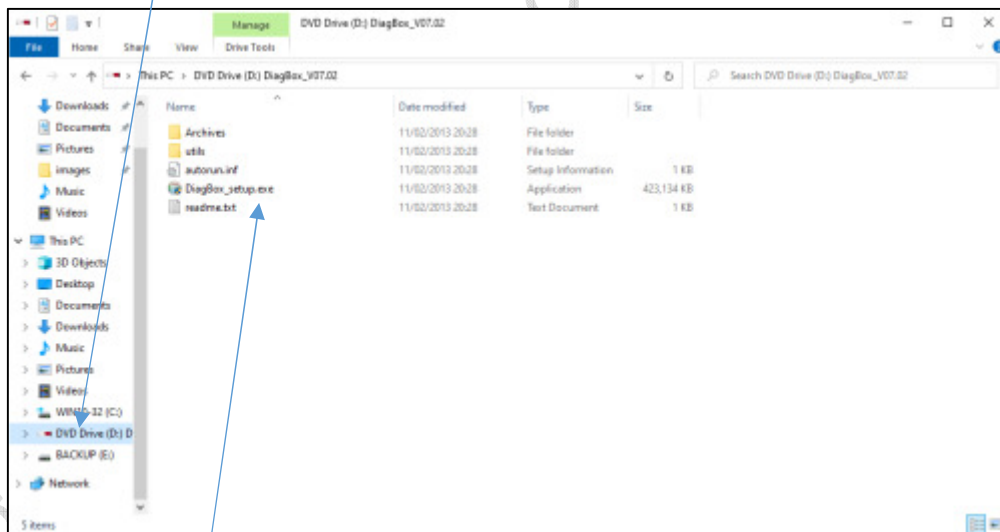
### 3.2 Installing Diagbox

Once the above has been done, browse to the folder where the Diagbox ISO is located:

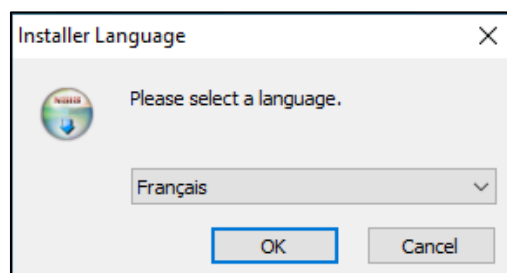


And double click the ISO file (at the top).

Windows 10 will mount the ISO as a virtual CD automatically:

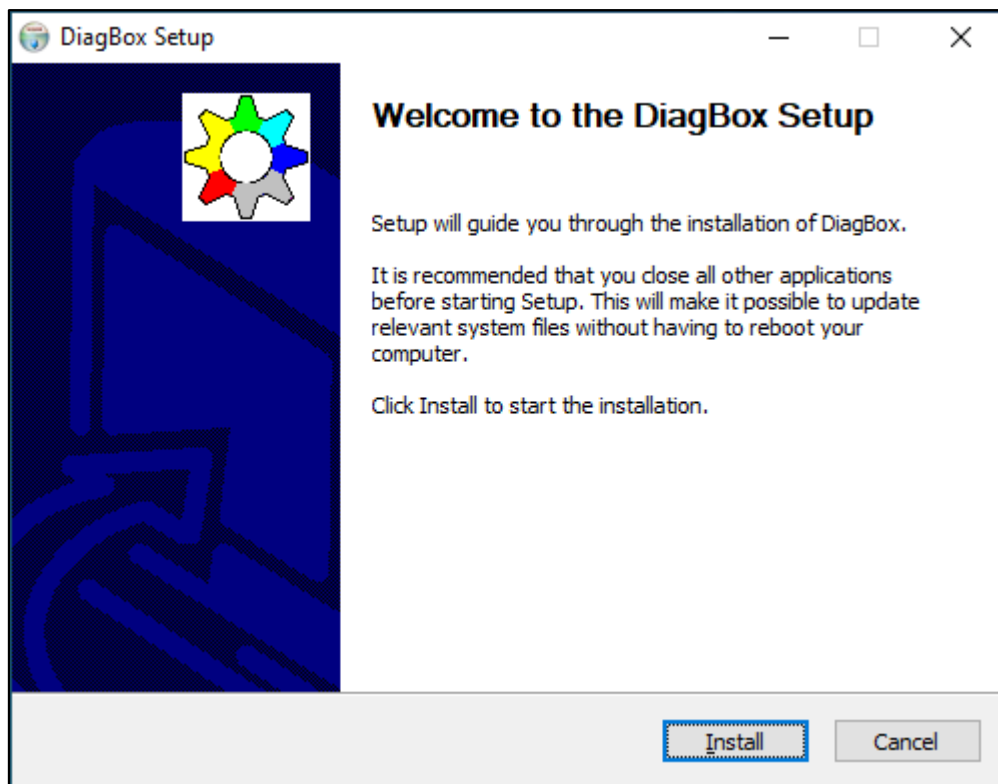


Double click DIAGBOX\_SETUP.EXE to begin



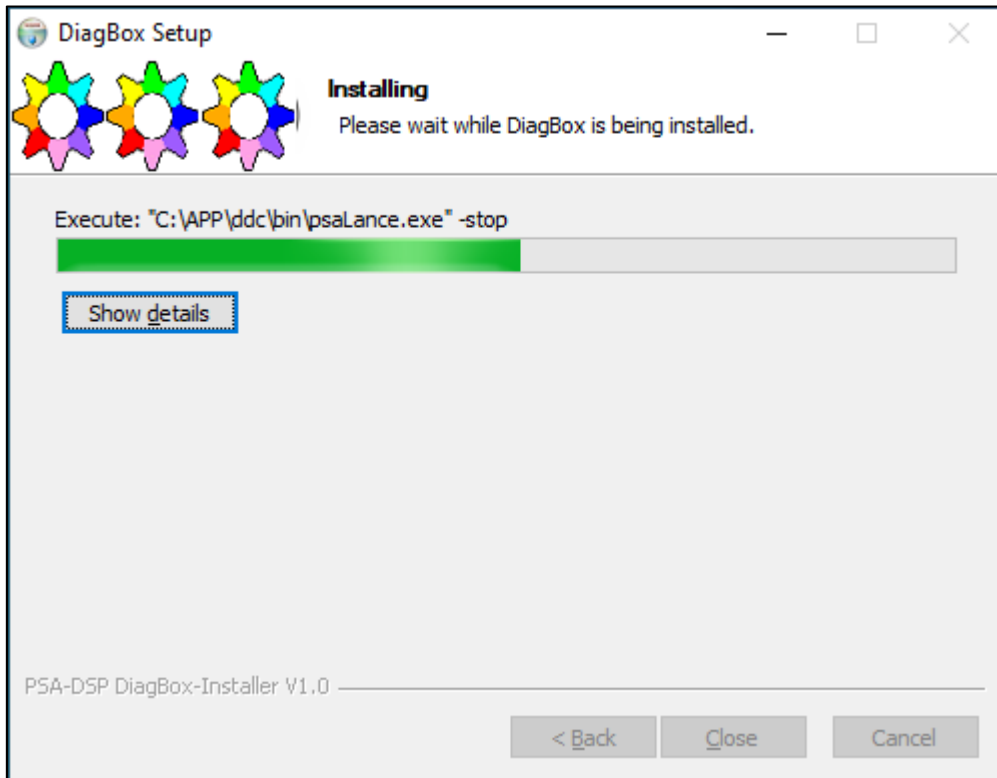
Note that French is the default, make sure you select your preferred language before clicking OK.

Click INSTALL when this box appears:

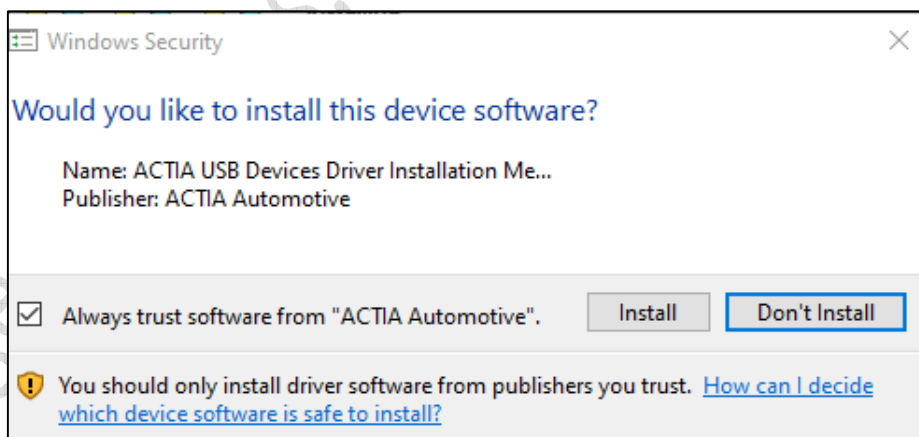


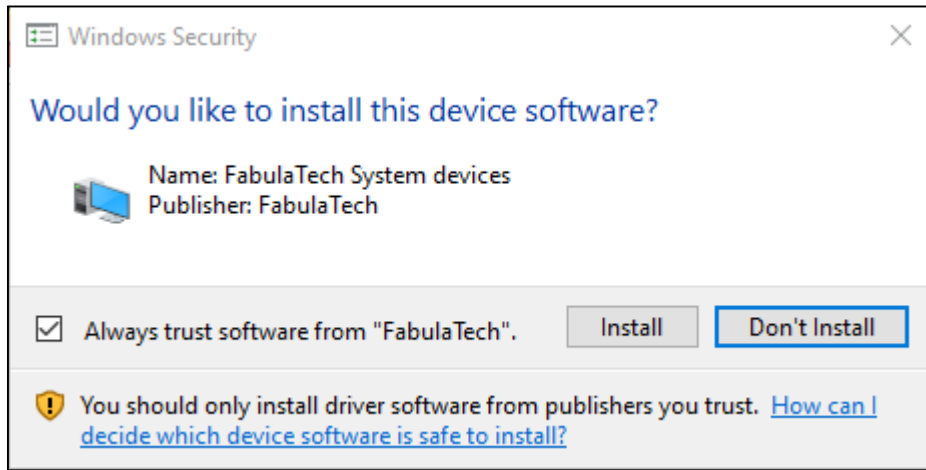
And let it begin installing:



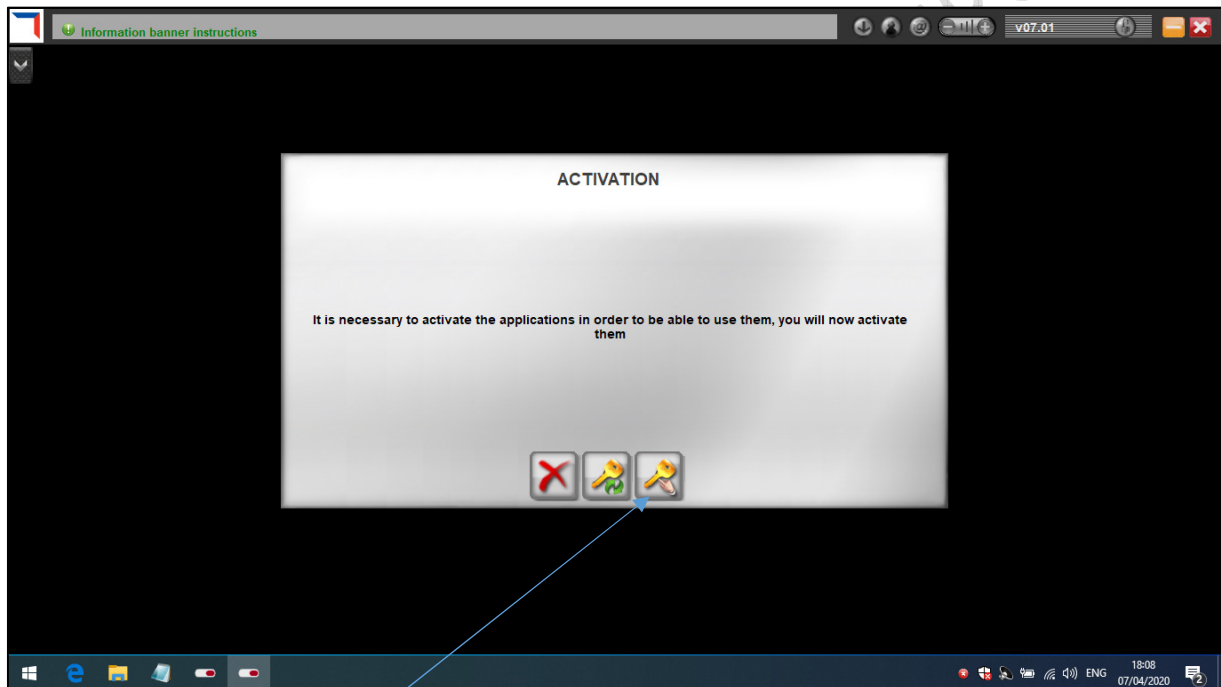


A couple of boxes will now appear, asking you to install some device drivers. Make sure the "always trust" boxes are ticked, and click INSTALL:



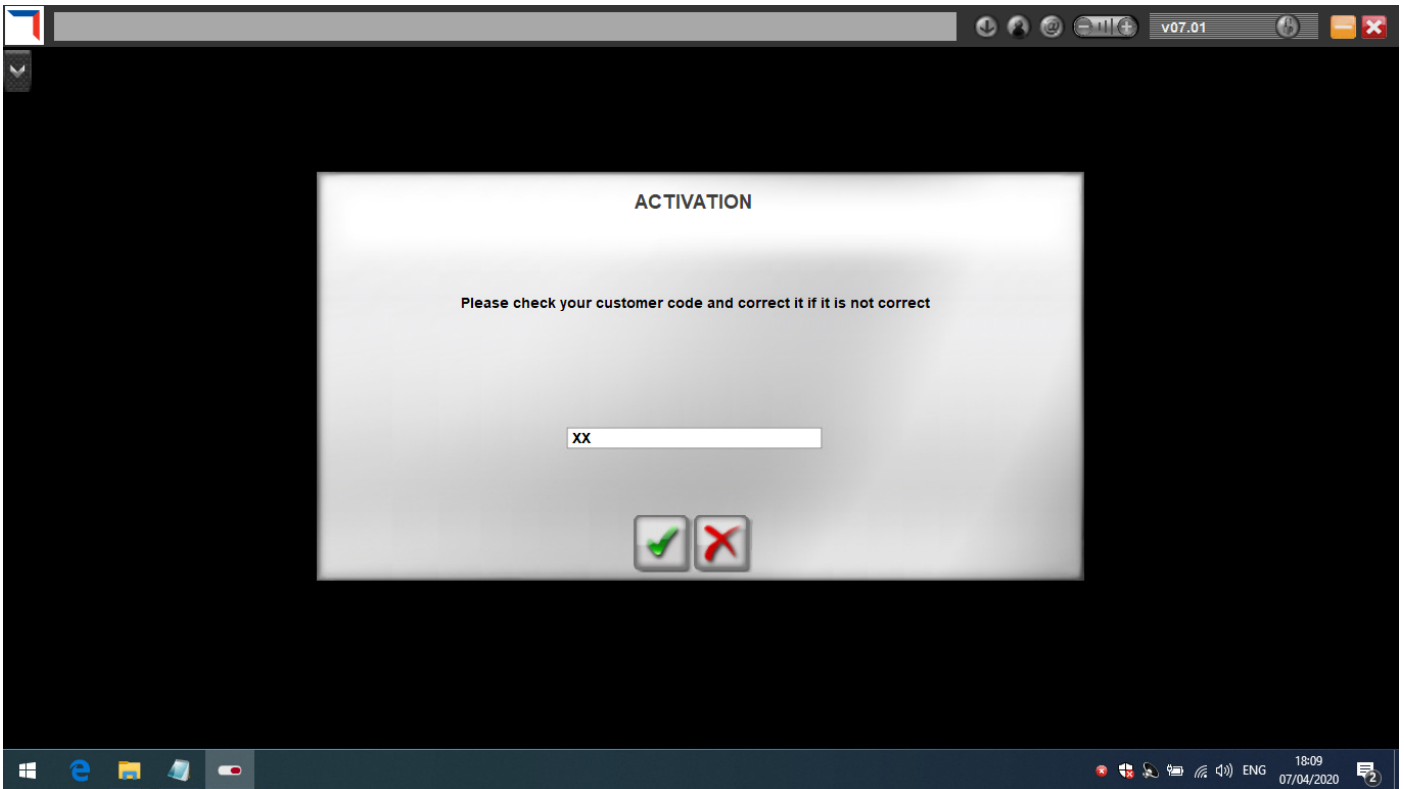


Now we start to see the first glimpse of Diagbox, and it wants us to activate it.

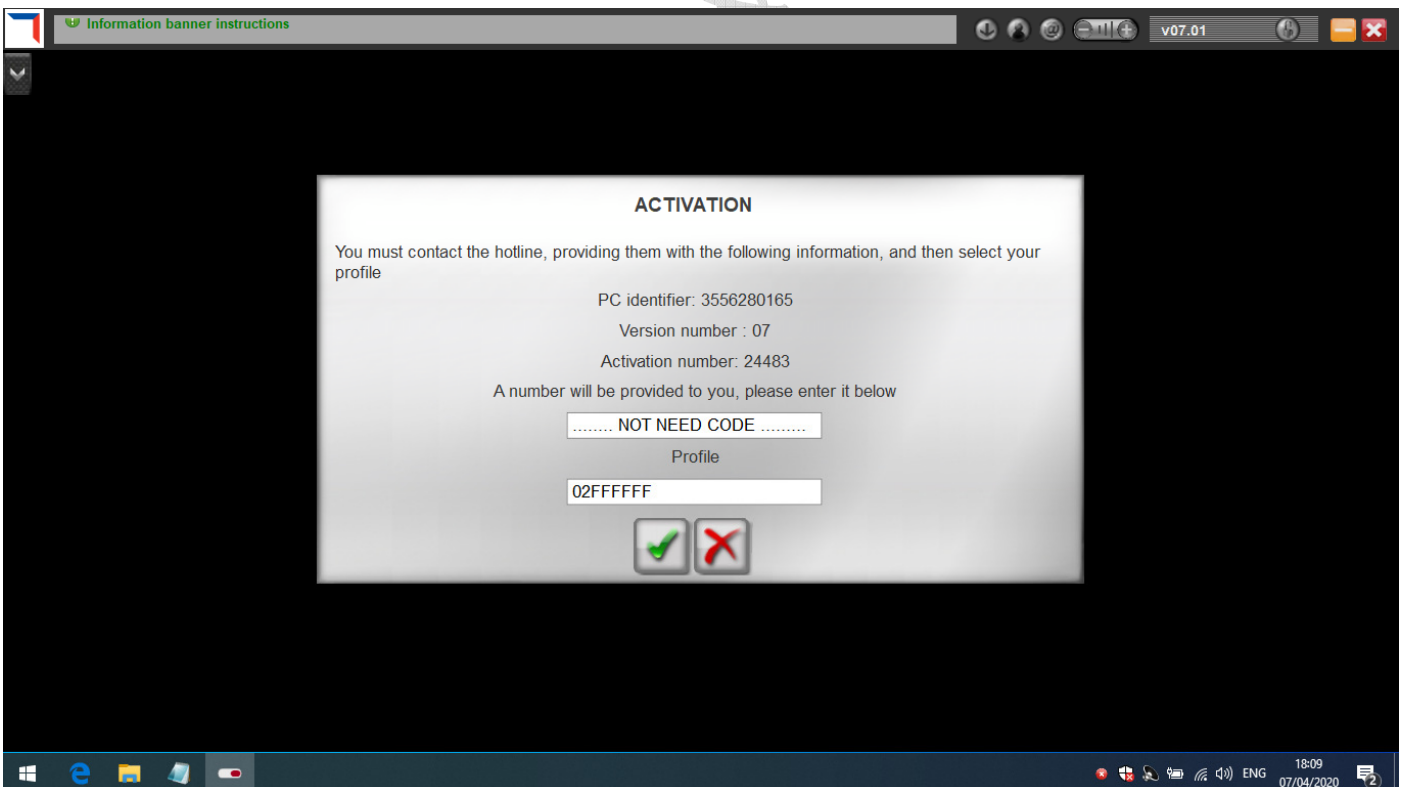


Click the MANUAL ACTIVATION box on the right.

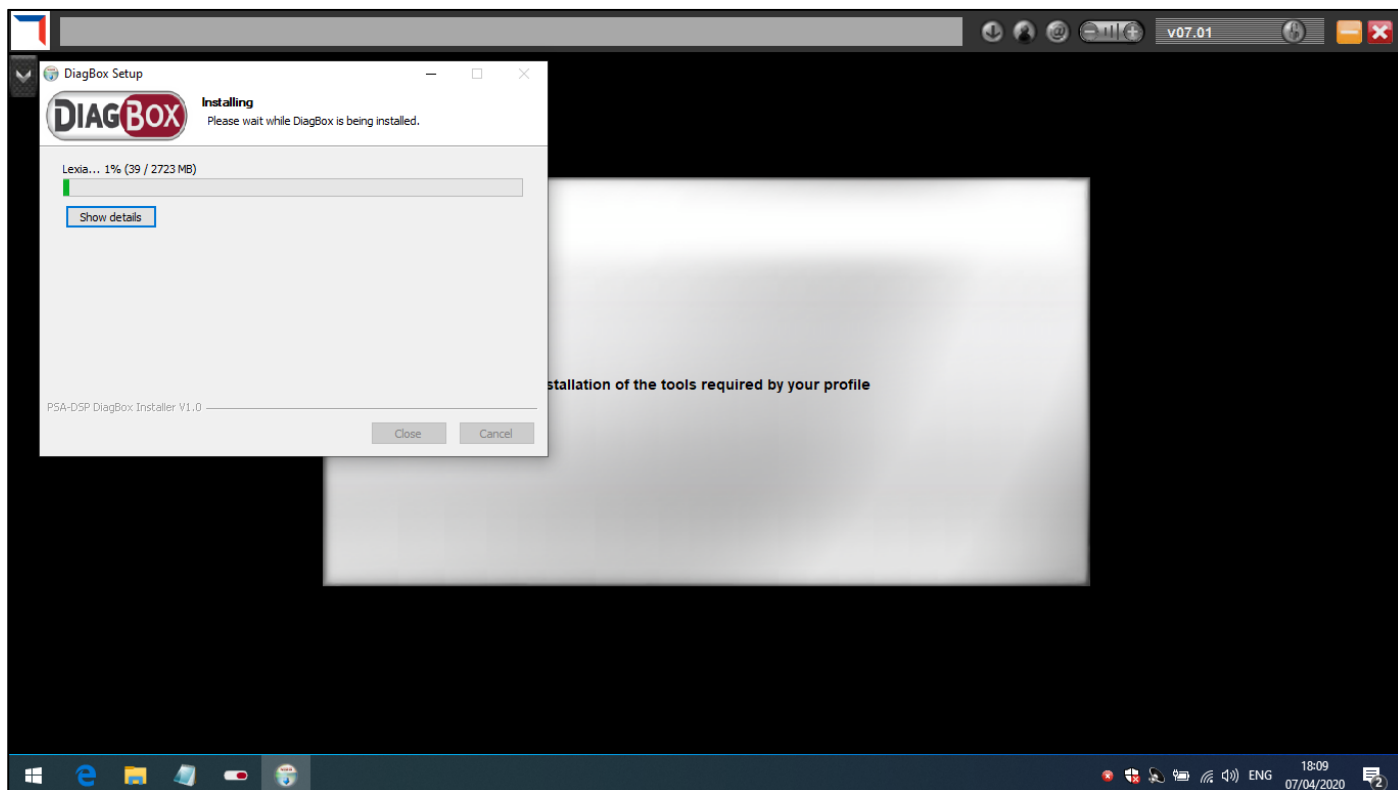
This box will appear. Don't change anything, just click the green tick box:



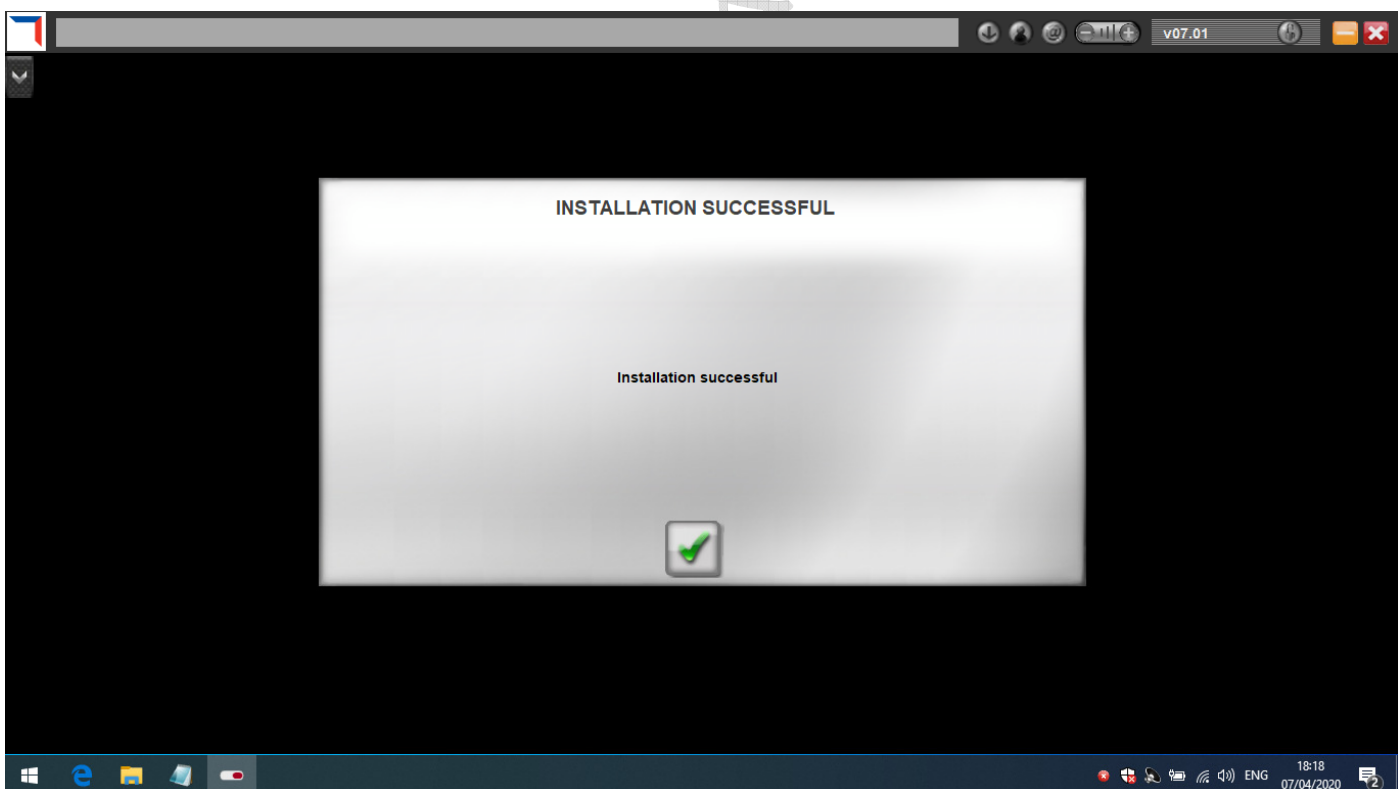
Now we see this box. Again, green tick:



And installation will continue. This will take a good ten minutes or so:

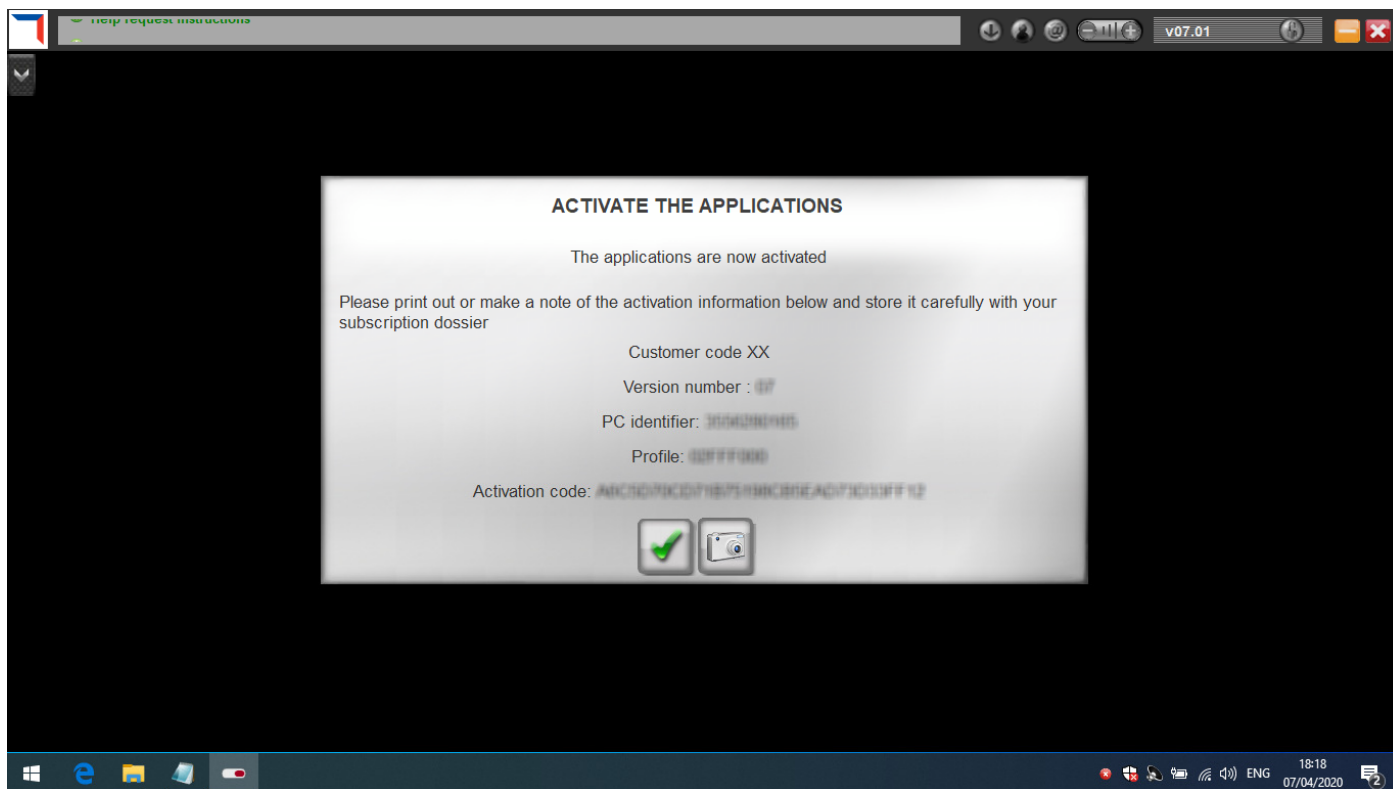


Eventually it will finish:



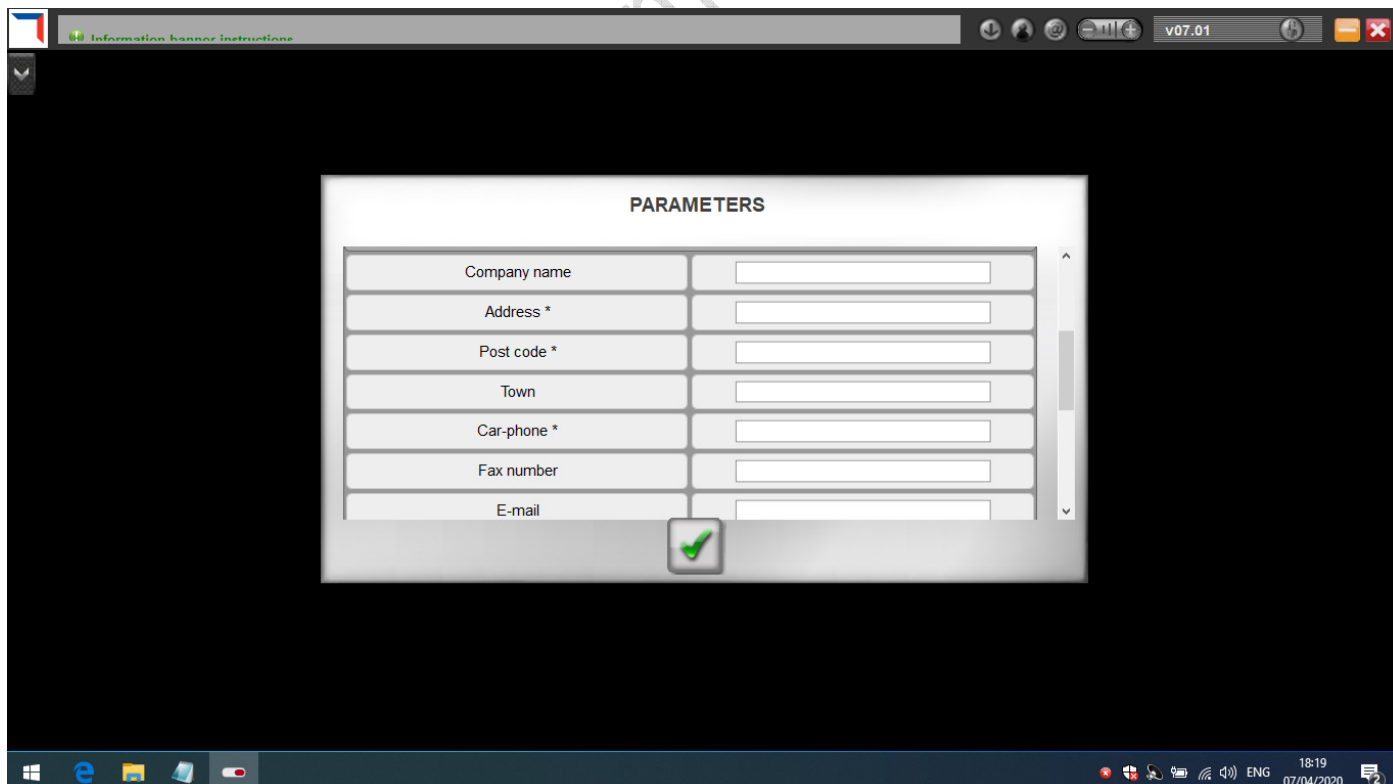
Click the green tick to proceed.

You'll then get this information screen. I've blurred out my results.

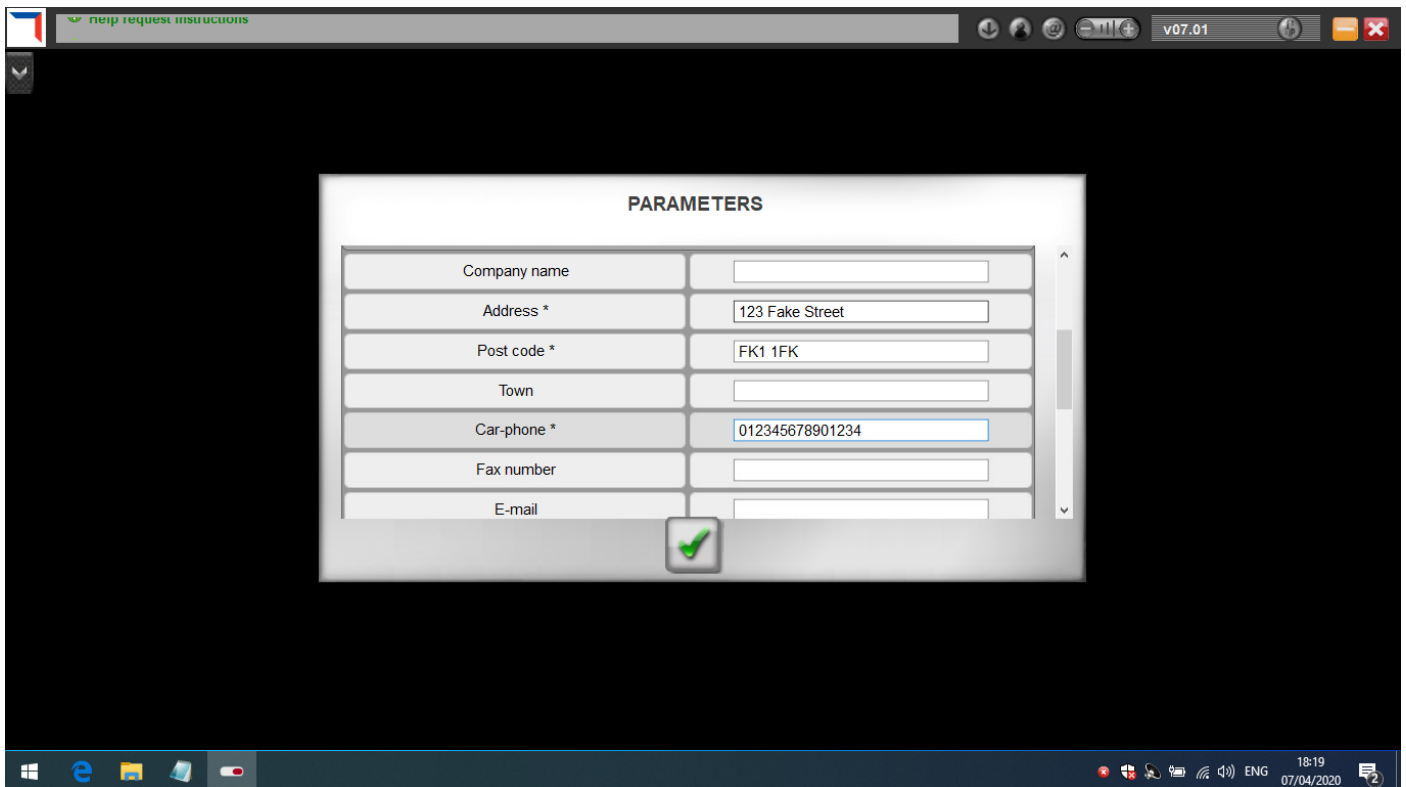


Make a note or screen capture them for reference, then click the tick again.

We're now asked to enter some details (address, postcode, phone number):

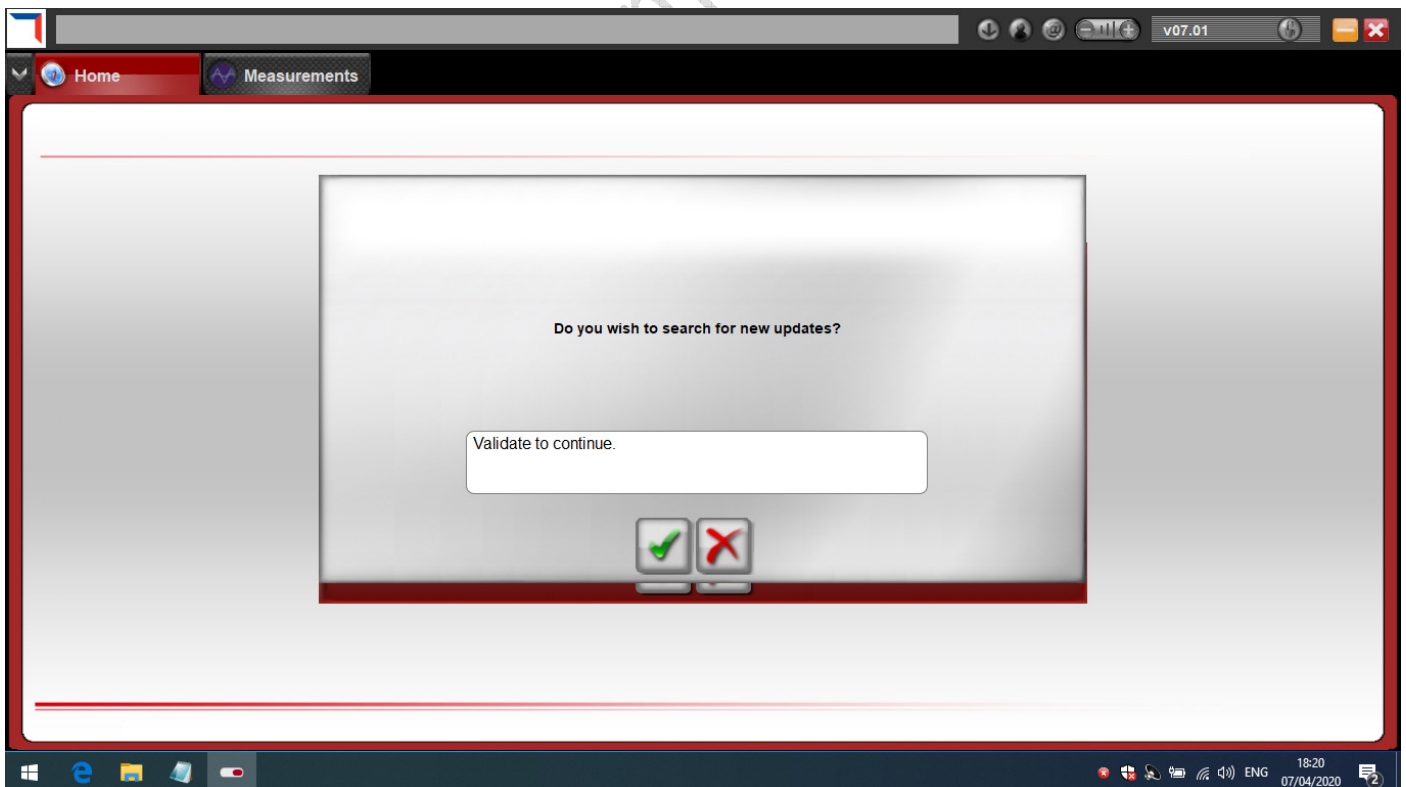


I just entered the following:



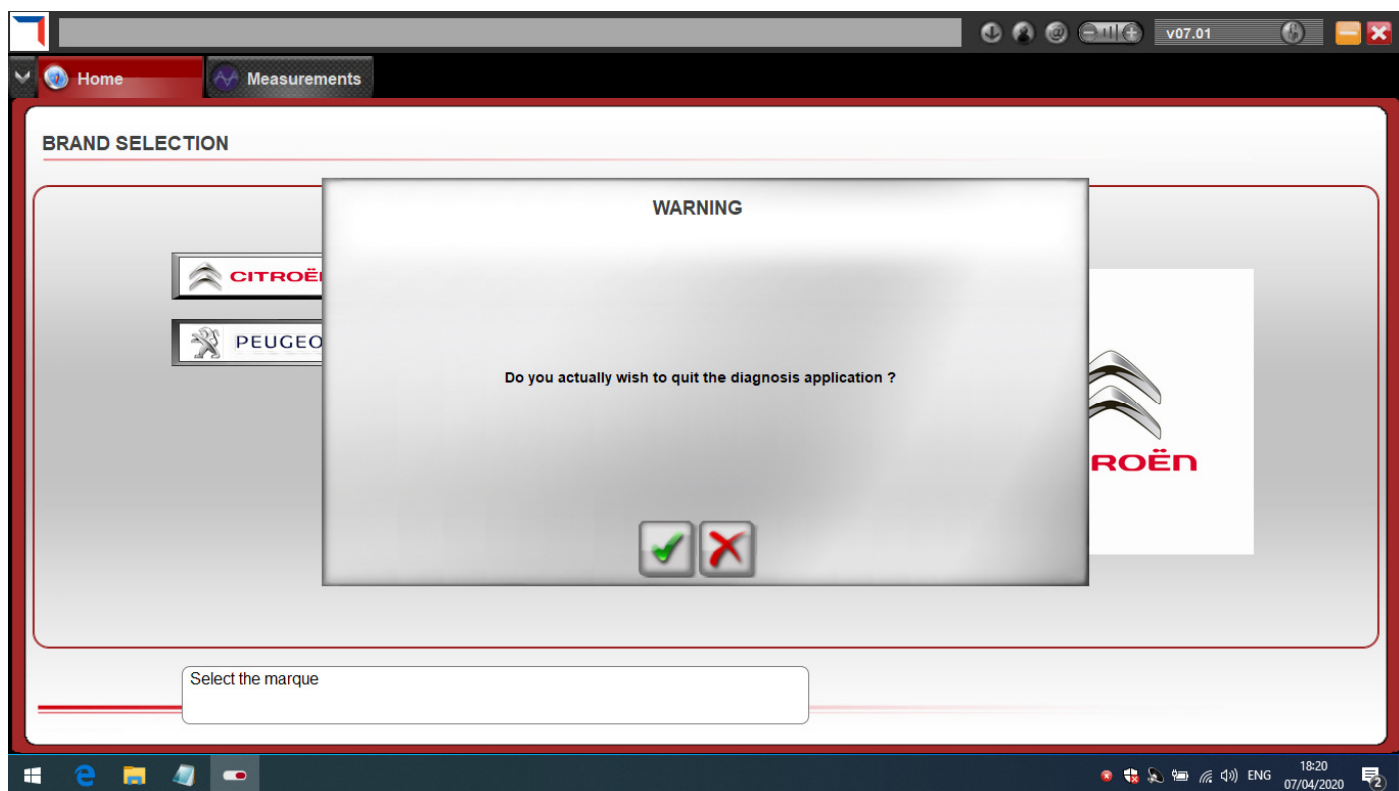
We're then asked if we want to search for updates.

Click the red cross as we're going to do this manually.



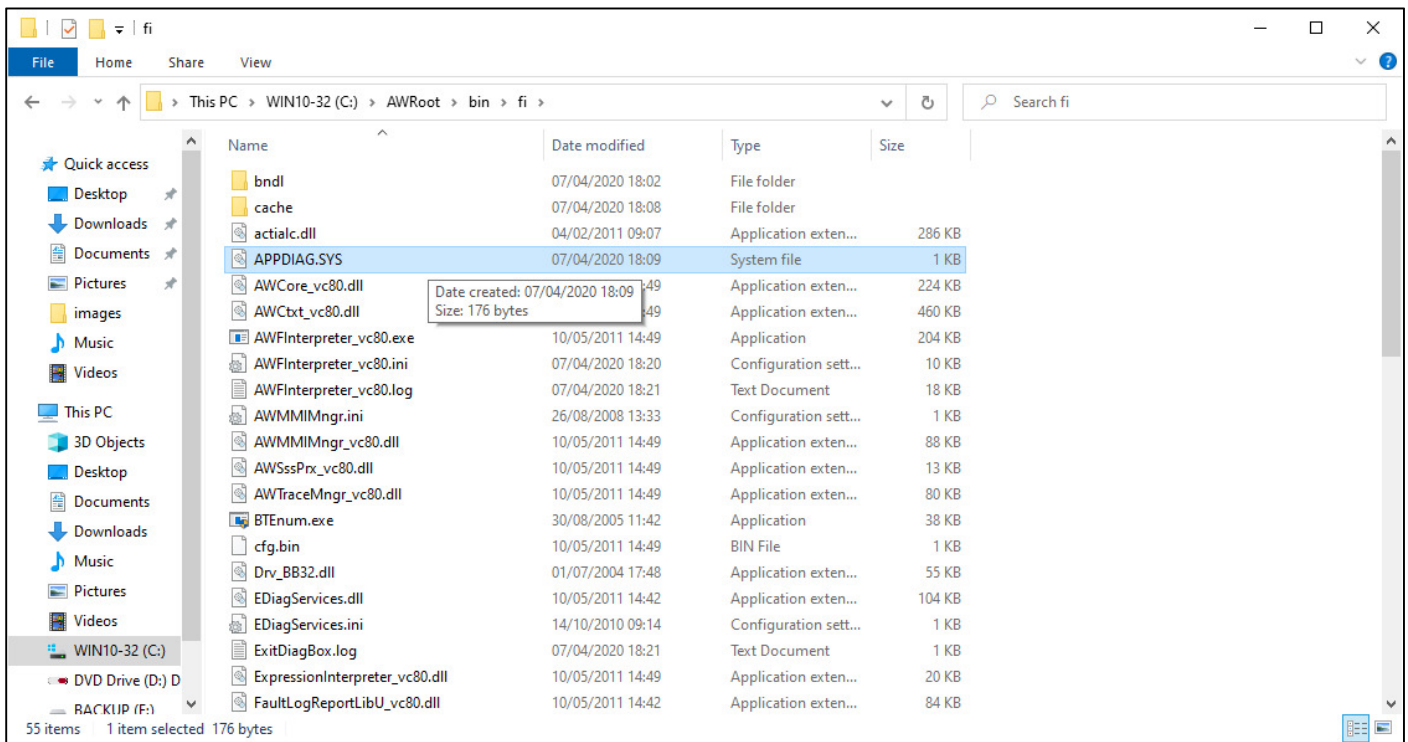
We probably don't have access to Peugeot's servers anyway.

Now quit the program.

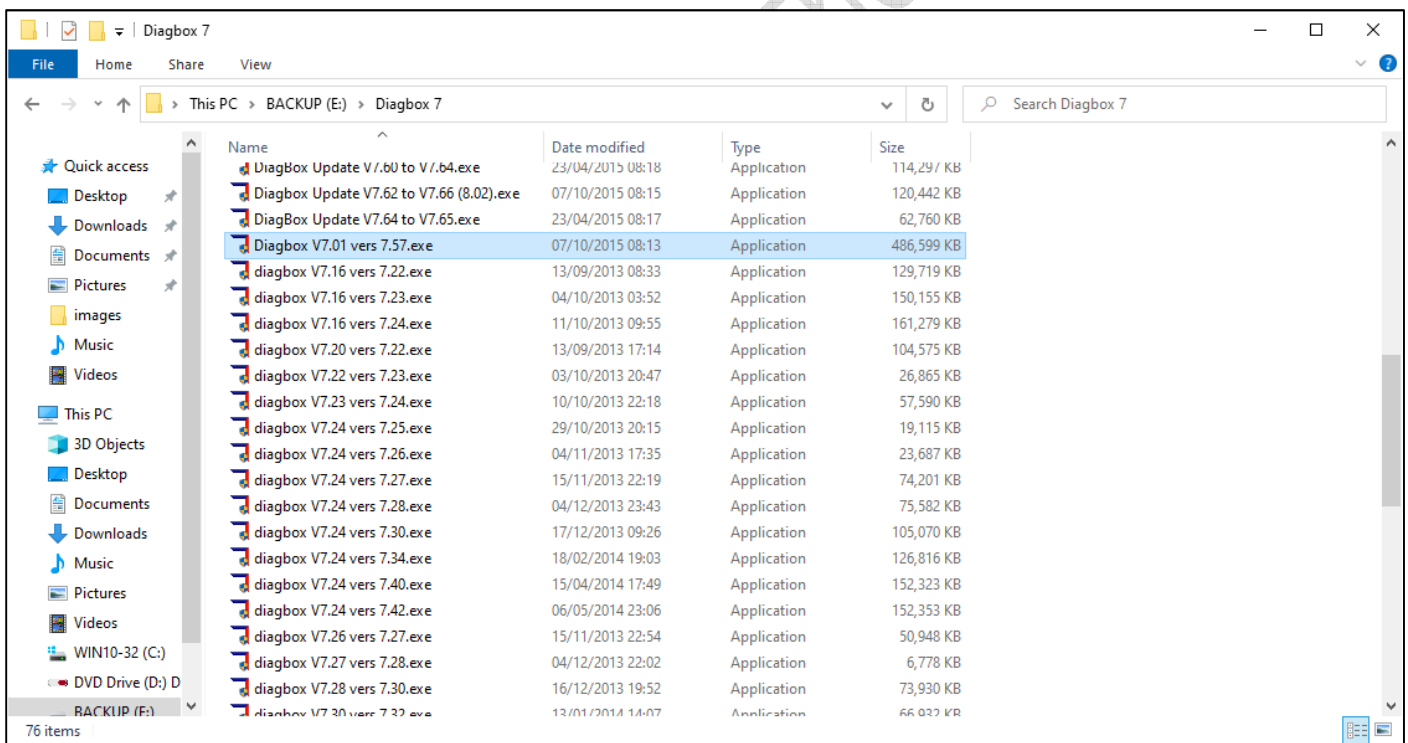


Before we run any updates, we need to make a backup of an important file. I think that this file contains the registration information and gets overwritten when an update is performed.

Browse to the folder `C:\AWROOT\BIN\FI` and make a copy of `APPDIAG.SYS`



Once you've done that, have a look for the update you want to install.



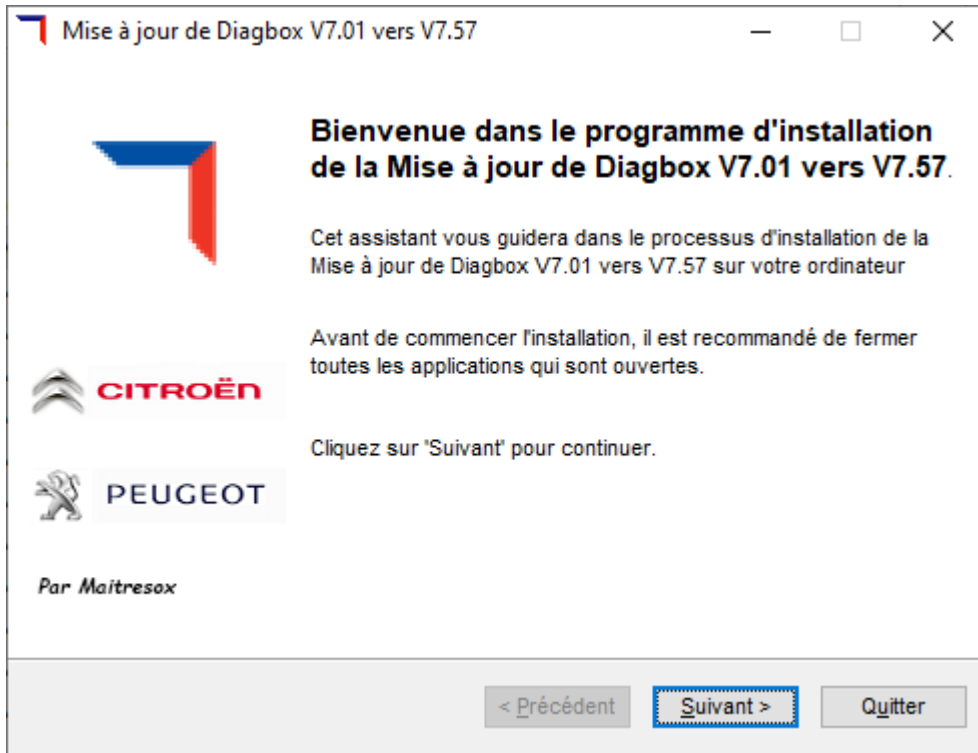
I have dozens of them, but the only one you need is 7.01 to 7.57. Unless you're diagnosing really modern cars, 7.57 should do you. This patch was released in October 2014.

This blog details the versions and release notes for them all:

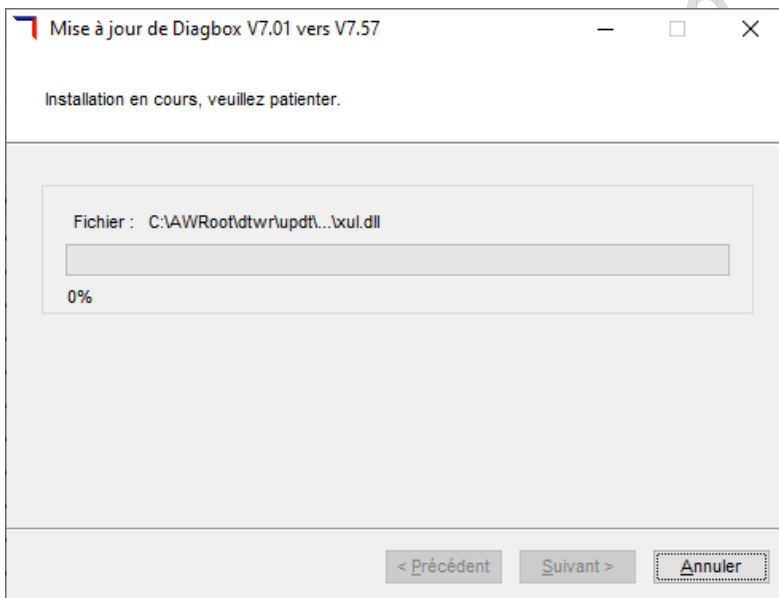
<http://blog.obdii365.com/2019/06/23/psa-diagbox-v7-v8-v9-released-notes/>

Double click the file and click SUIVANT (next) to proceed:

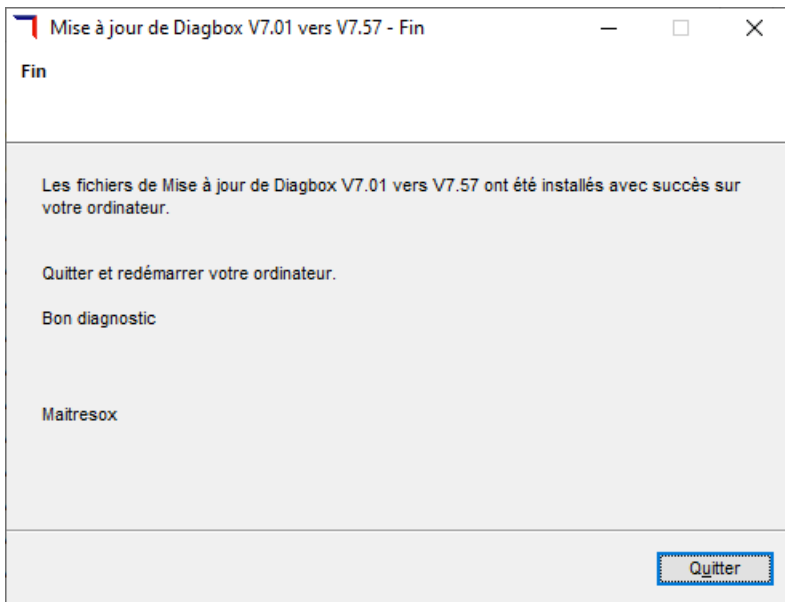




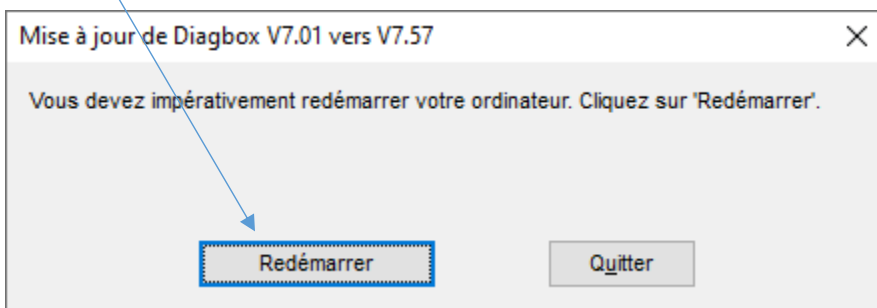
Again, this will take a while:



Eventually it will be complete, click QUITTER (quit):



And reboot:



When your machine has restarted, double click the DIAGBOX icon on the desktop and let it complete the update.

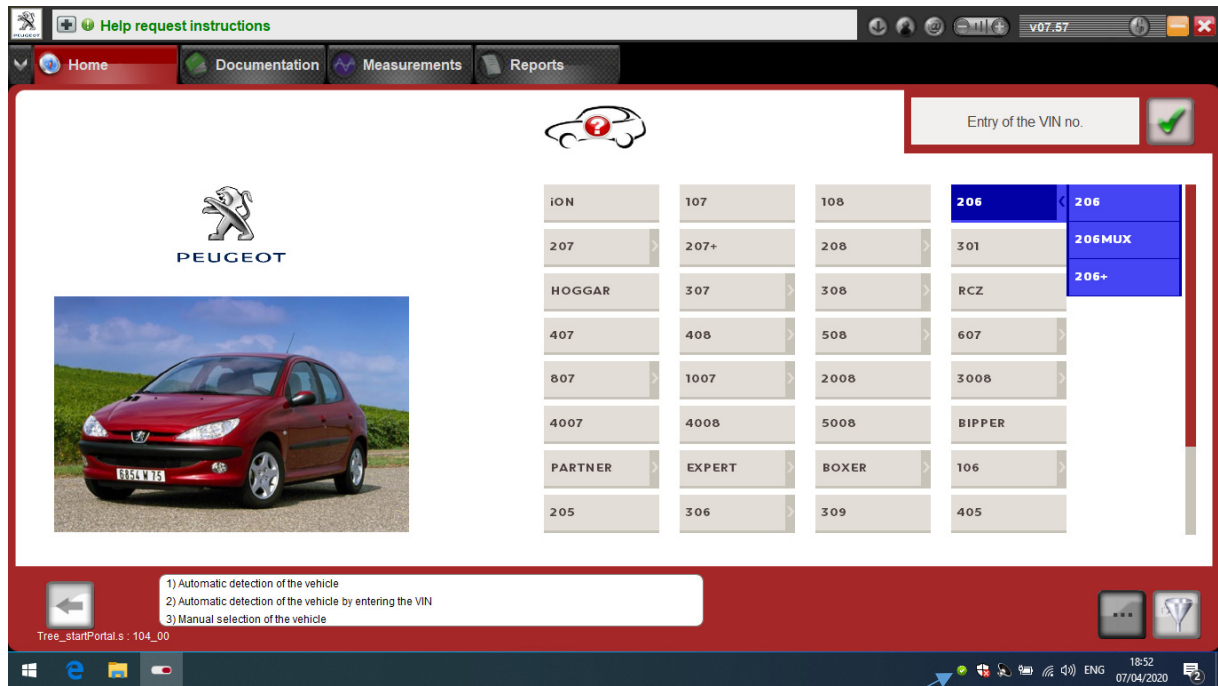


If it hangs on the “please wait” screen when complete, just go into task manager and close the application.

Finally, move your backup copy of APPDIAG.SYS back to C:\AWROOT\BIN\FI

You may also need to download .NET Framework 3.5, Windows 10 will notify you if you do, and proceed to download and install it.

Plug in your cable, start Diagbox and get diagnosing!



Note the green symbol in the taskbar showing all is working

### 3.3 Additional Software

A very useful program to add is a PDF writer. That will allow you to “print” reports and information from Planet to pass to the customer. My personal choice is CUTE PDF but there are plenty of others around.

**CutePDF**® *ideas for PDF* About Us | Contacts

Home Products Support Buy Now Company

CutePDF Professional CutePDF Writer Custom PDF Writer CutePDF Form Filler CutePDF Form SDK

## CutePDF™ Writer

### Convert to PDF documents on the fly — Free Software

Portable Document Format (PDF) is the de facto standard for the secure and reliable distribution and exchange of electronic documents and forms around the world. CutePDF Writer is the free version of commercial **PDF converter** software. CutePDF Writer installs itself as a "printer subsystem". This enables virtually any Windows applications (must be able to print) to convert to professional quality PDF documents - with just a push of a button!

FREE software for commercial and non-commercial use! No watermarks! No Popup Web Ads! **No Adware, No Malware!**

**Have specific and advanced needs above and beyond that of other users?**  
Integrate PDF creation ability into any application, solution, service or terminal server (e.g. Citrix) environment and more. [Custom Redistribution now available!](#)

**Installation Requirements**

- Supports Microsoft Windows 98/ME/2000/XP/2003/Vista/7/2012/8/8.1/10 (32-bit/64-bit).
- Requires PS2PDF converter such as Ghostscript (recommended). You can get the free GPL Ghostscript 8.15 [here](#).

▶ GNU Ghostscript is a free open-source interpreter for the PostScript language and the PDF file format. It is distributed under the [GNU General Public License](#). You may obtain the latest version of free GPL Ghostscript and its source code [here](#).

**What's New**


- Added support for both 32-bit and 64-bit Windows 8, 8.1, Windows 10. **NEW**
- Added support for both 32-bit and 64-bit GPL GS. **NEW**
- Seamlessly integrate with [CutePDF Professional](#).
- New version works with the [latest version of Ghostscript](#).
- To use with other PS2PDF application, please refer to [FAQs](#).
- Supports foreign language Windows better.
- No longer include Ghostscript. You may download and install it separately.

[Free Download](#)  
(Ver. 3.2; 1.56 MB)

[Free Converter](#)  
(GPLGS8.15; 5.01 MB)

[Get Zipped Setup](#)

[FAQs](#)



Selected as One of the "50 Best free downloads" by Computer Shopper

### 3.4 We're done!

And that's it. There are plenty of guides around for using Diagbox, this one is just to get you through the difficult install.

## PART 4: MAKING DIAGBOX WORK FOR YOU

Some of the biggest gripes from car owners are:

*Dealers are too expensive*

*“Fix-anything” garages don’t know my car inside out*

*“Fix-anything” garages’ generic code readers don’t give enough info – even expensive ones*

*I’m scared the garage has no idea and is throwing parts at the problem*

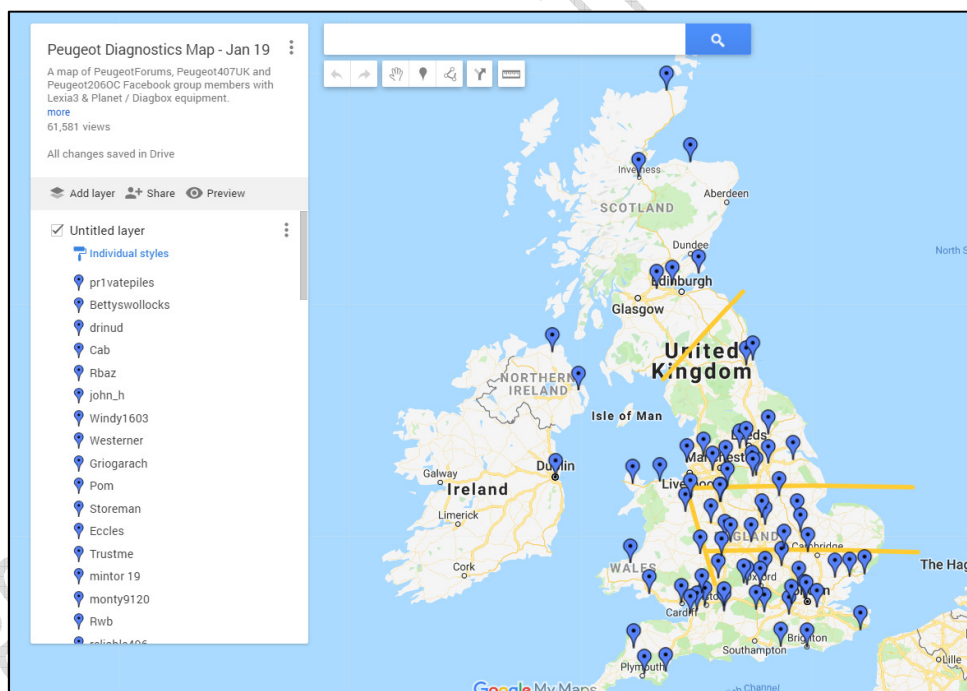
*I’m worried the garage is making money out of me*

This is why a network of Planet owners was set up. This is a group of Peugeot owners and drivers who have the Planet kit, and the basic skills to use it. They’re not mechanics, they don’t own garages, so they have no vested interest in making money from you.

If they’re regulars on forums or Facebook groups then the chances are they’ll have more of an idea of what the car’s problems are than a garage.

The map is comprised of members of a couple of large Peugeot and Citroen forums, and members of a couple of Peugeot Facebook groups.

Although UK biased, the map boasts members from across the world:



<http://tinyurl.com/peugeotplanetmap> Or Google “Planet Owners Map”

However, we can always use more. You’ll see big patches around the country with little or no coverage. Plus, some people sell up their kit and car and move onto a different brand of car.

By charging a nominal amount (that’s completely up to you), it will pay for your Lexia purchase in no time.

It’s also worth getting some business card printed from somewhere like *Vistaprint* and sticking them on all the Peugeots you can find in your town or supermarket car park!